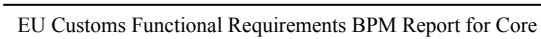
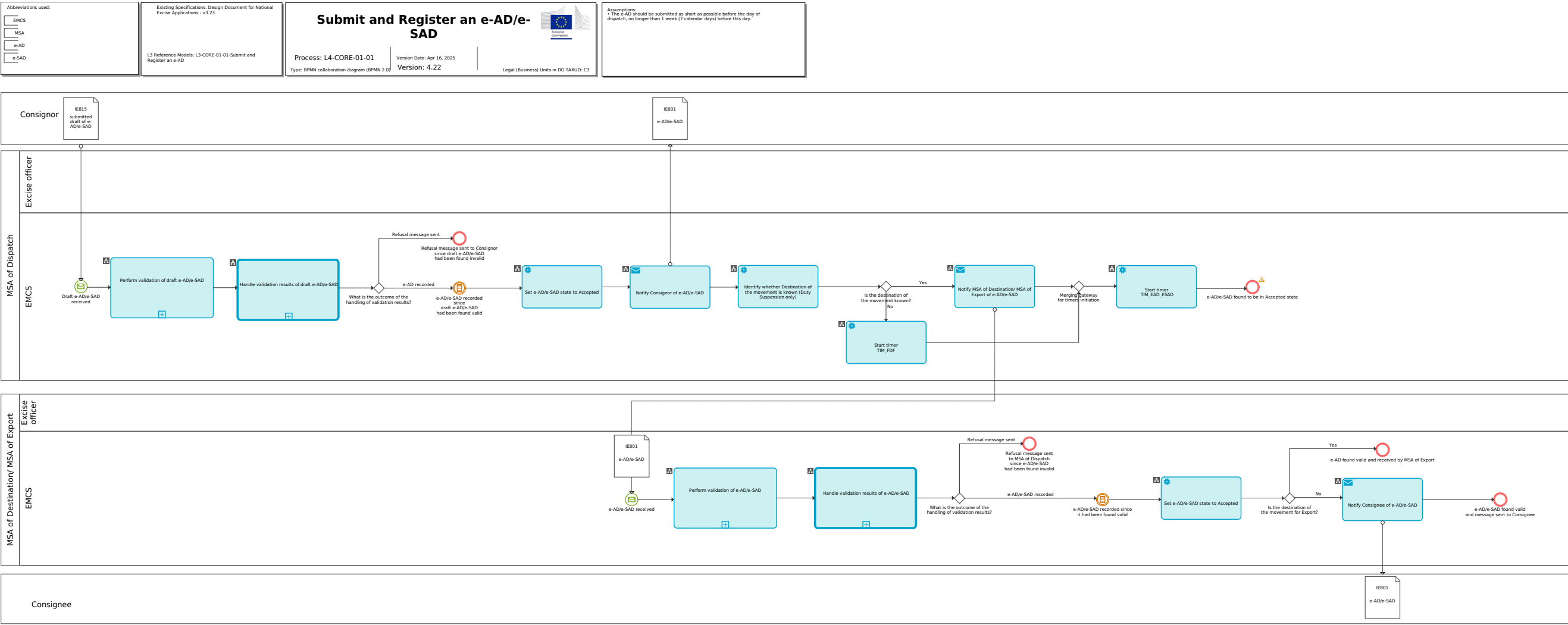


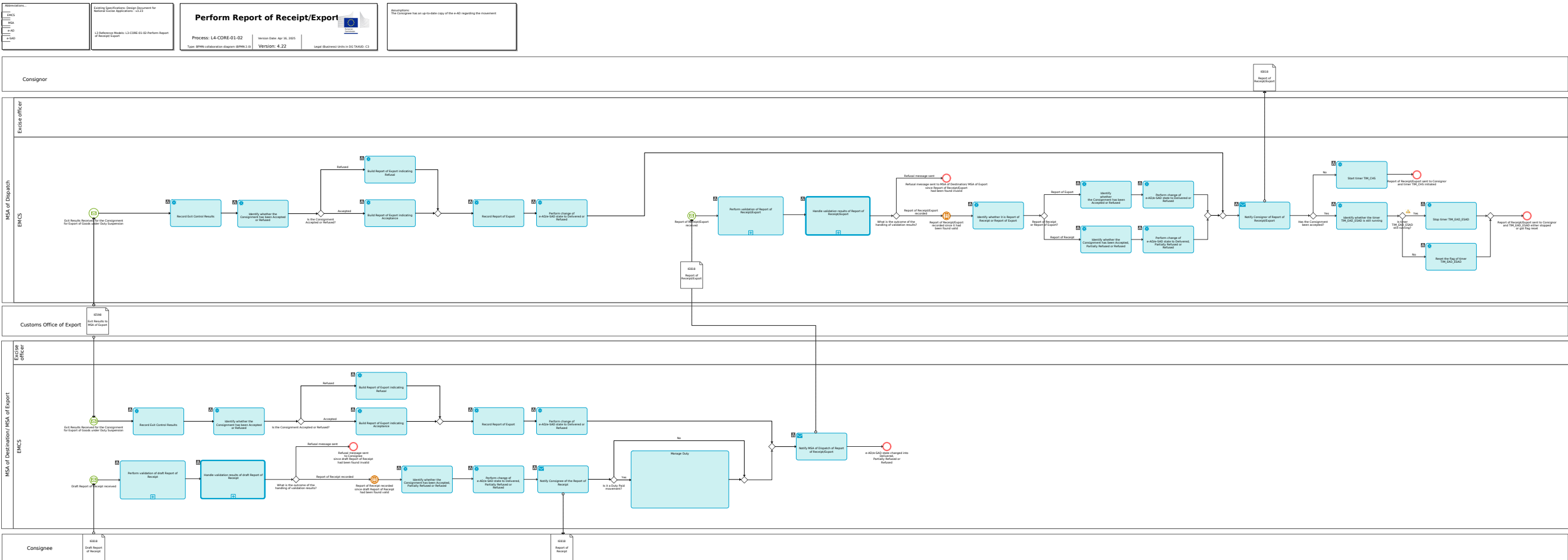
## Process L4-CORE-01-00-Core Master Process



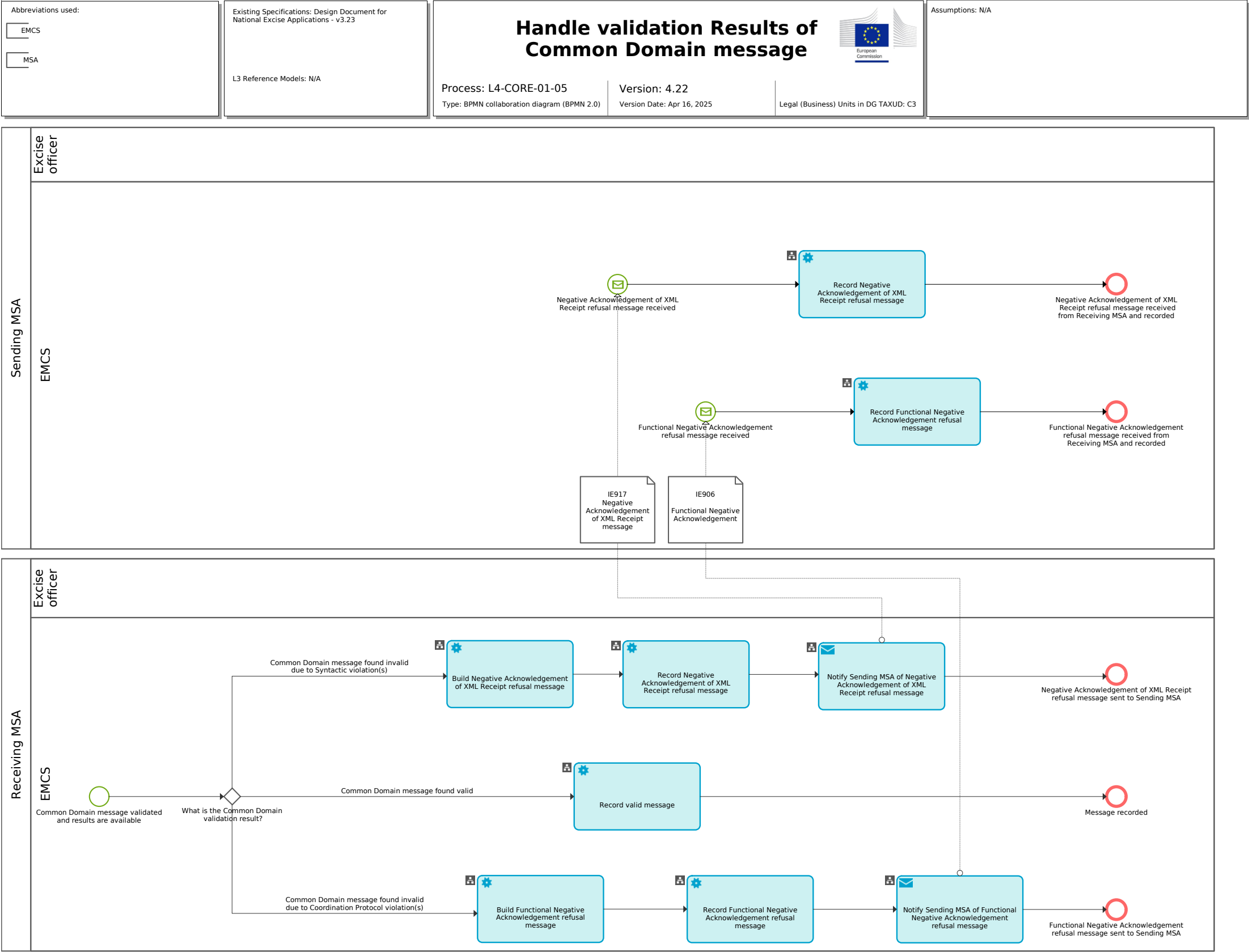
Process L4-CORE-01-01-Submit and Register e-AD/e-SAD



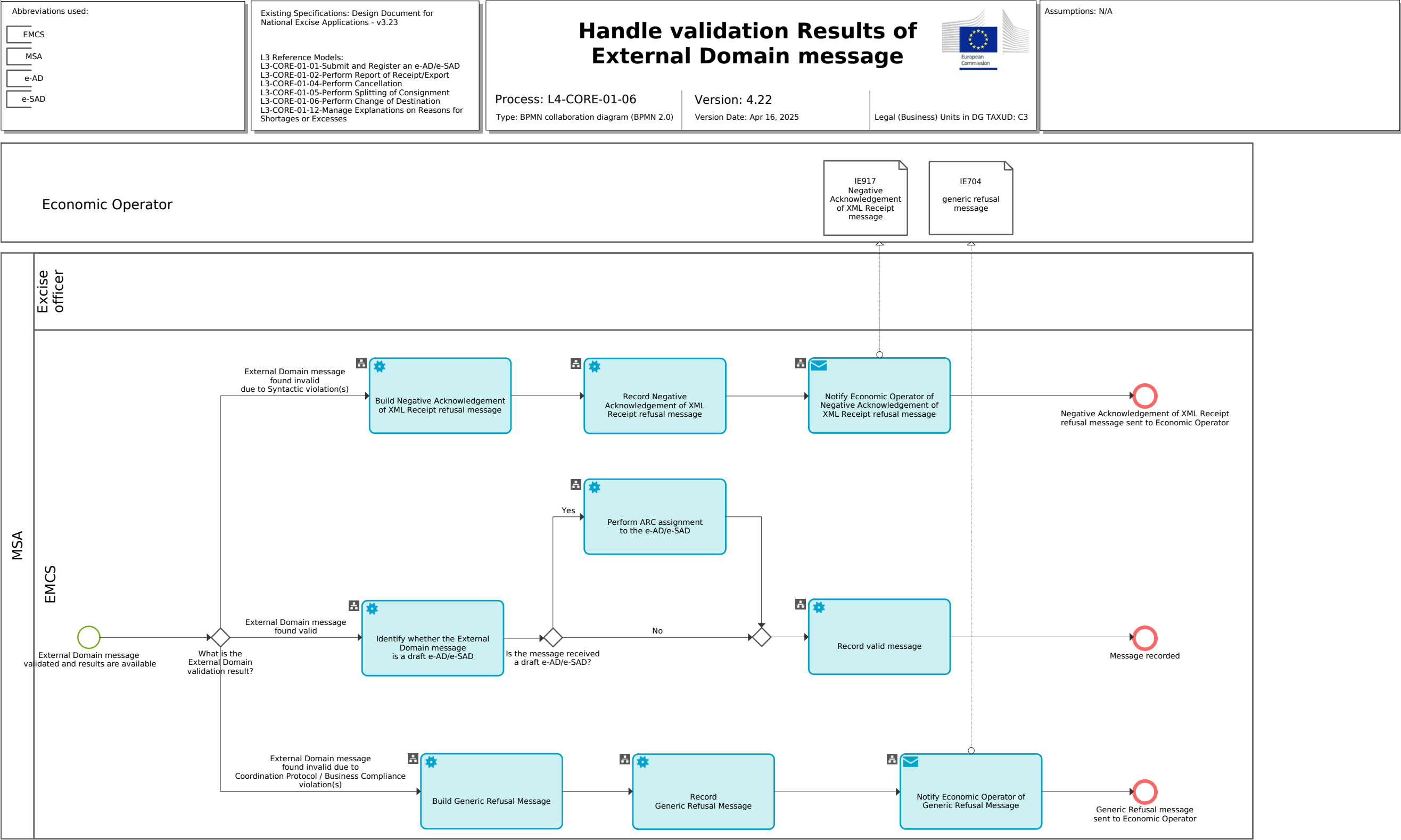
Process L4-CORE-01-02-Perform Report of Receipt/Export



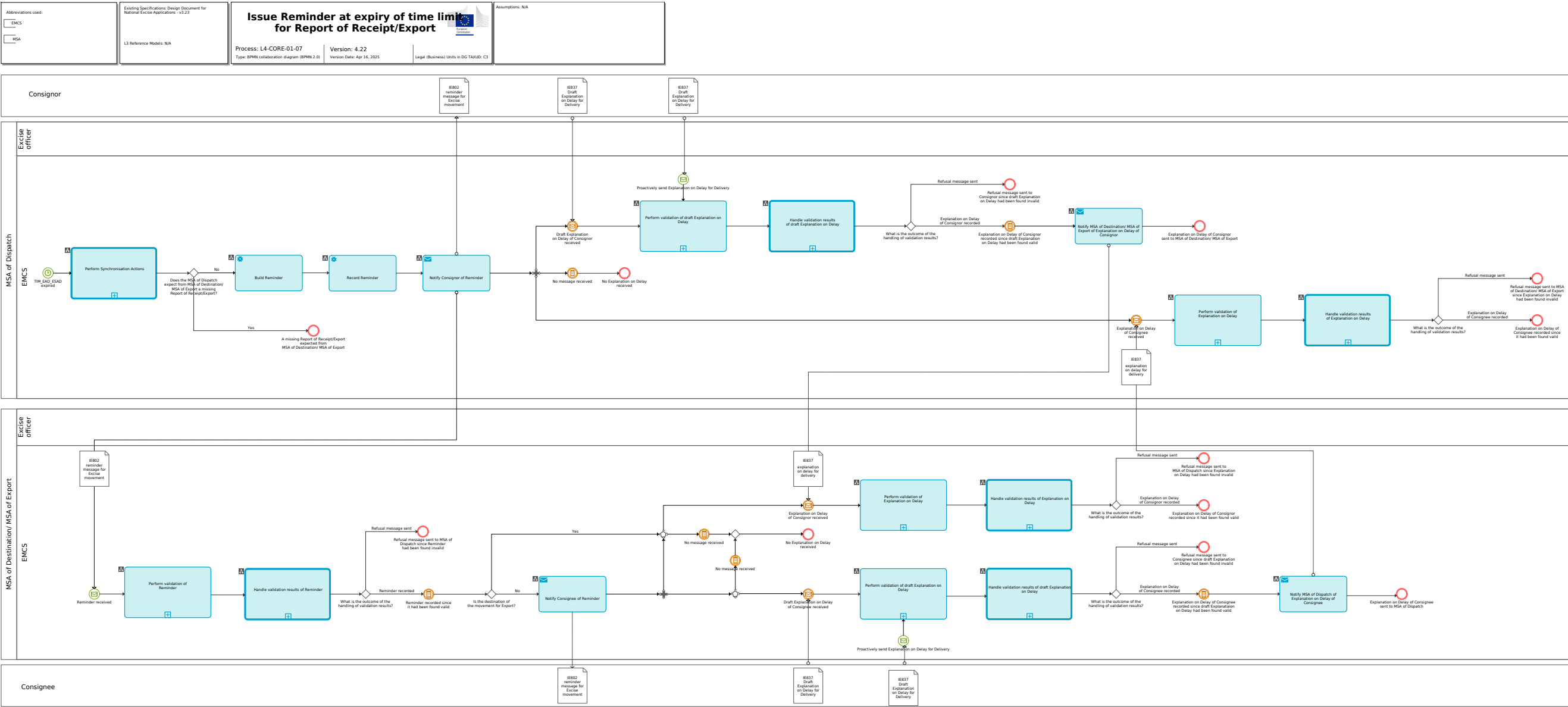
Process L4-CORE-01-05-Handle validation Results of Common Domain message



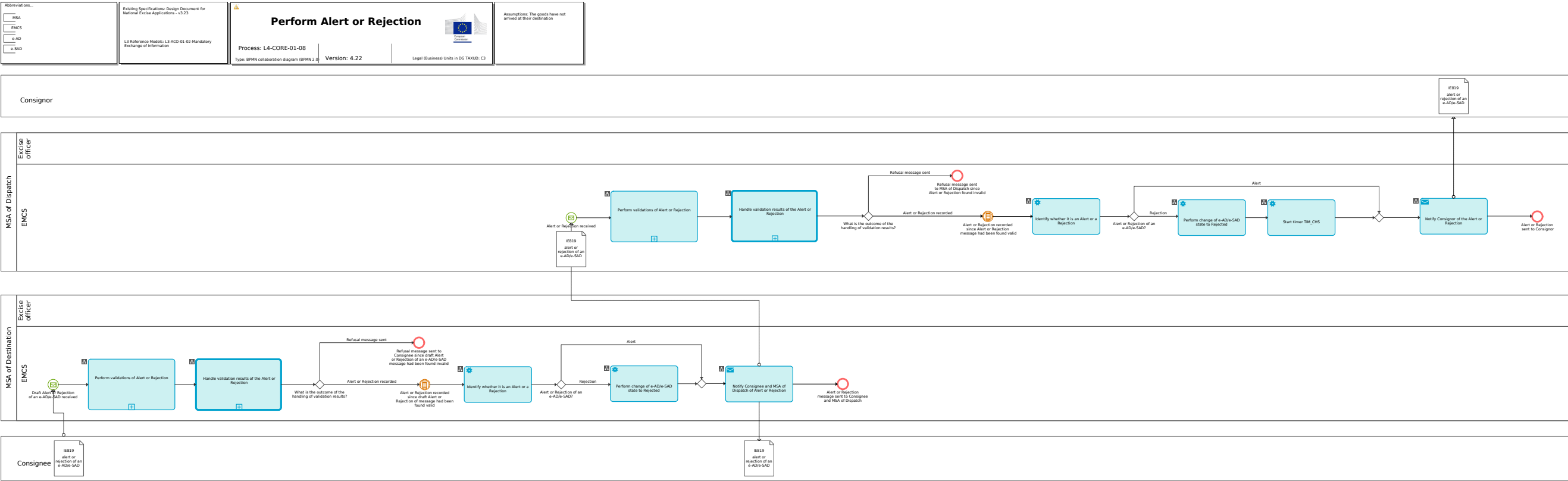
Process L4-CORE-01-06-Handle validation Results of External Domain message



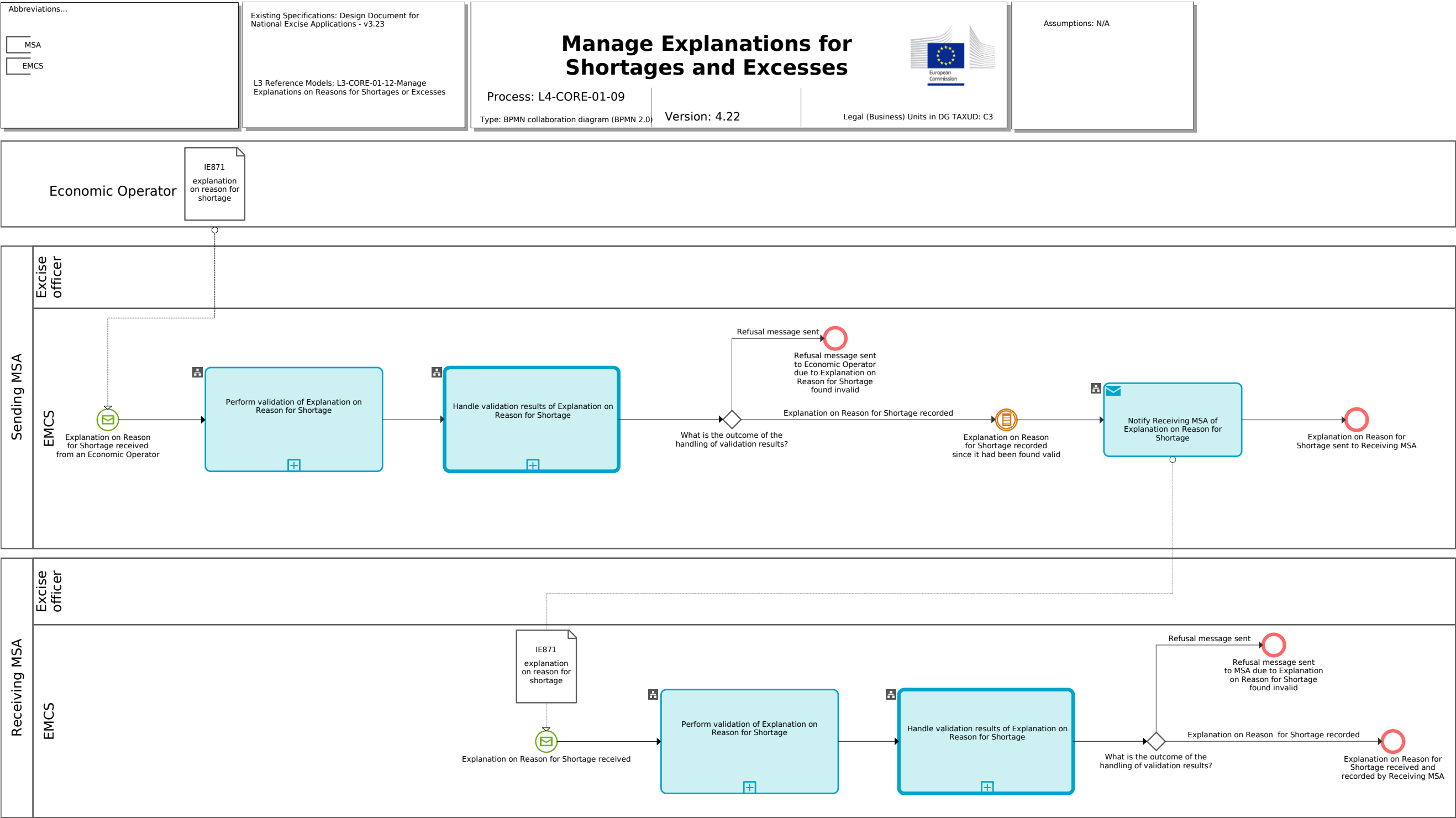
Process L4-CORE-01-07-Issue Reminder at expiry of time limit for Report of Receipt/Export



Process L4-CORE-01-08-Perform Alert or Rejection

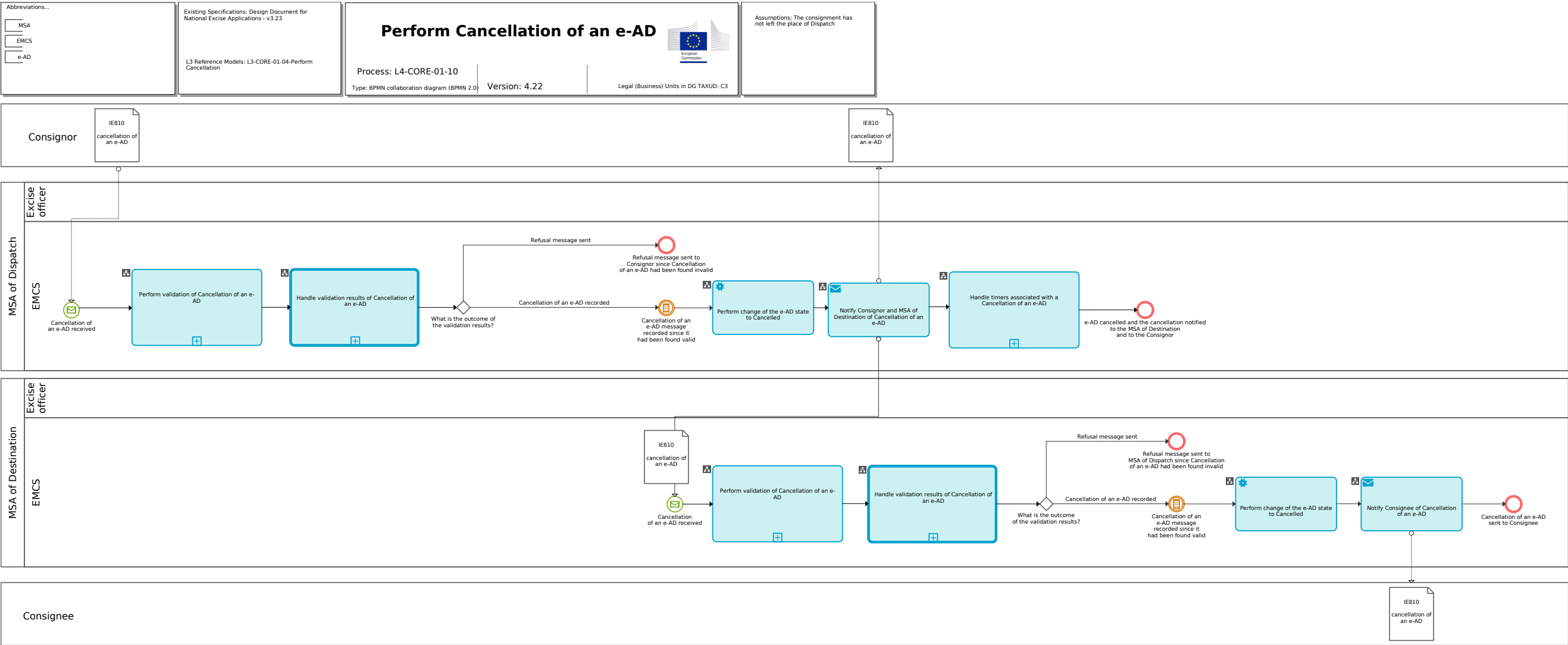


Process L4-CORE-01-09-Manage Explanations for Shortages and Excesses

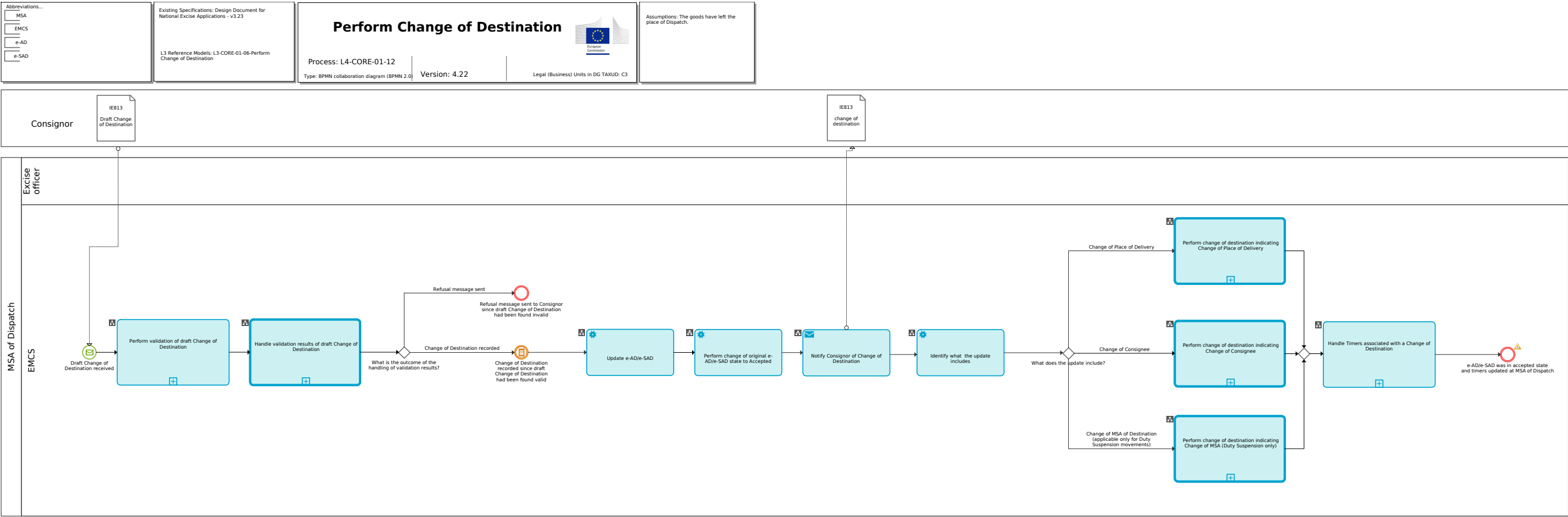




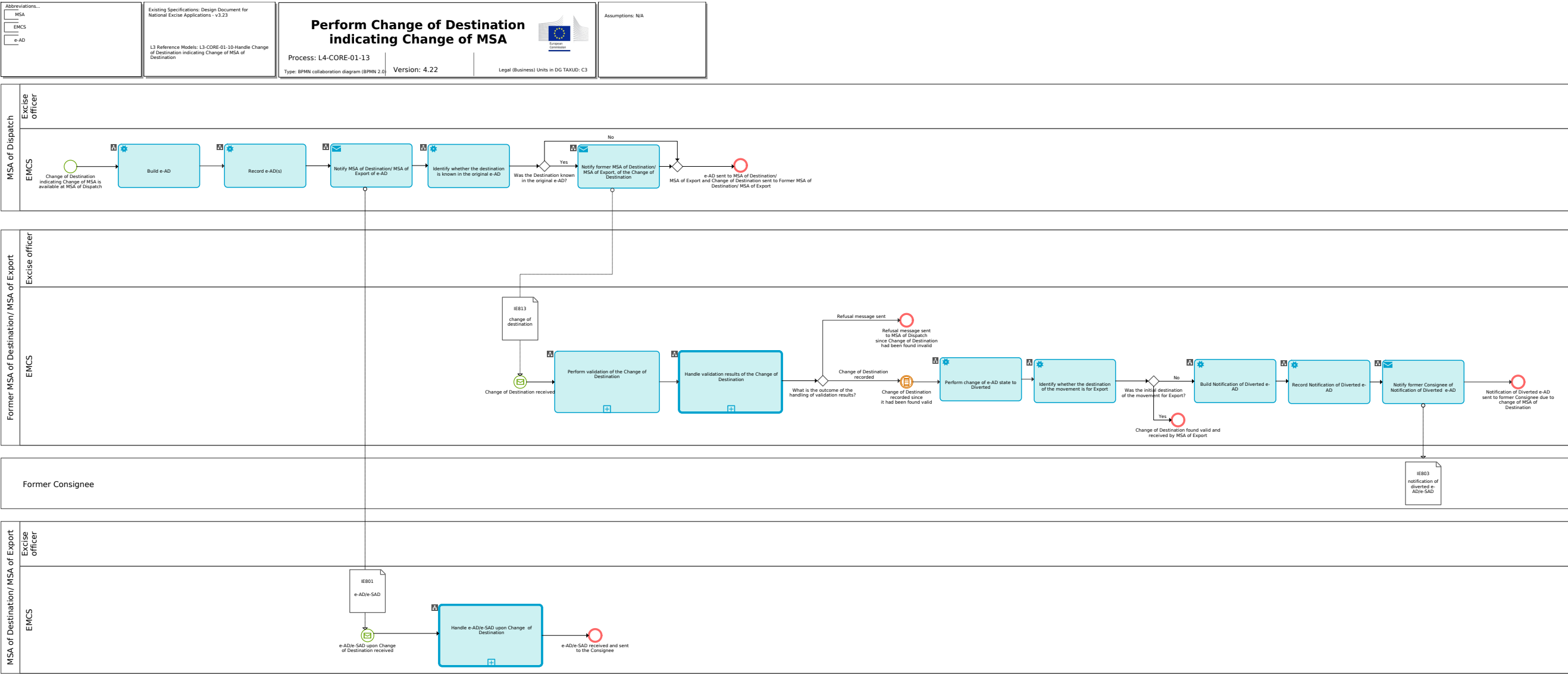
Process L4-CORE-01-10-Perform Cancellation of an e-AD



Process L4-CORE-01-12-Perform Change of Destination



Process L4-CORE-01-13-Perform Change of Destination indicating Change of MSA



Process L4-CORE-01-14-Perform Change of Destination indicating Change of Consignee

Abbreviations...

MSA

EMCS

e-AD

e-SAD

Existing Specifications: Design Document for National Excise Applications - v3.23  
  
L3 Reference Models: L3-CORE-01-11-Handle Change of Destination indicating Change of Consignee

Perform Change of Destination indicating Change of Consignee

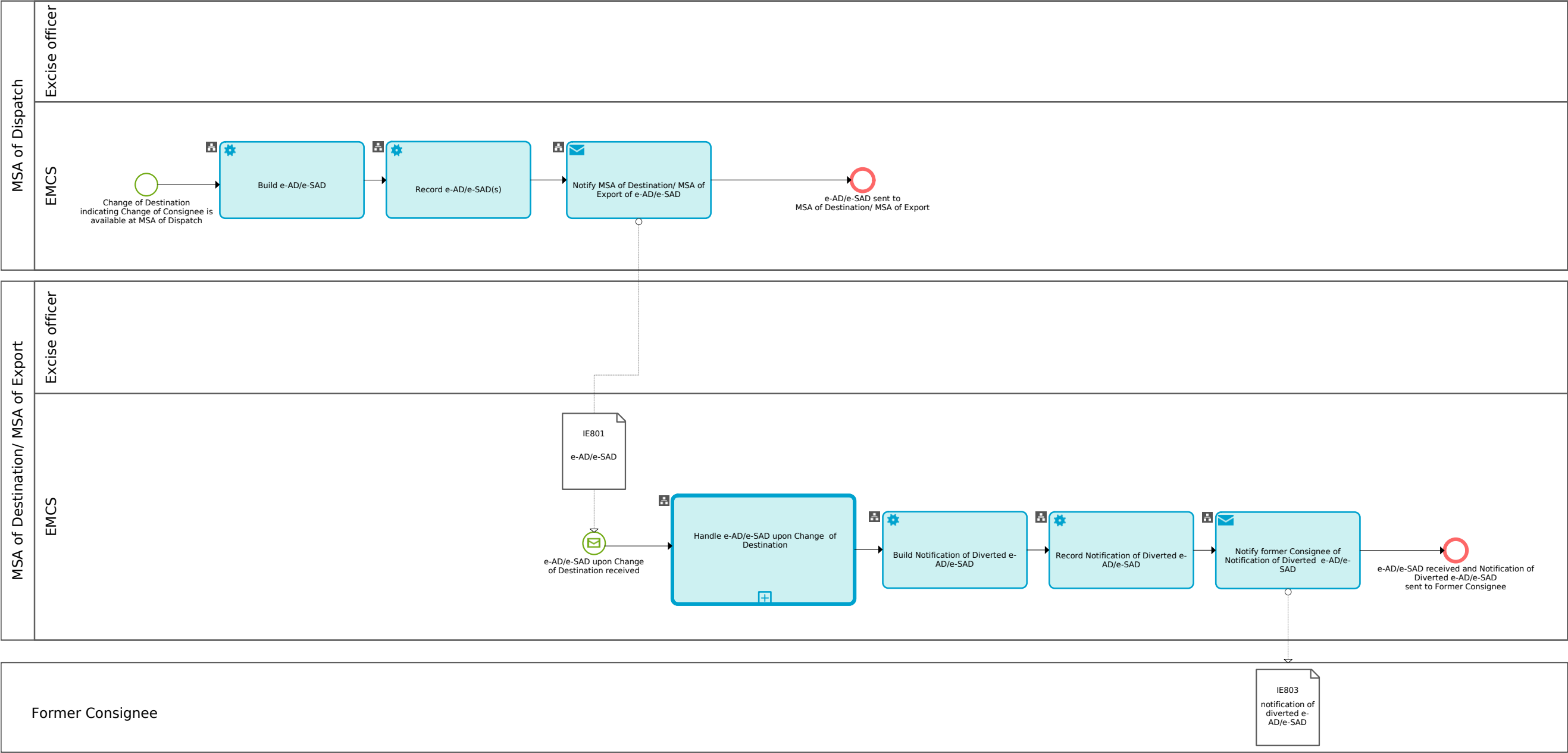
Process: L4-CORE-01-14

Type: BPMN collaboration diagram (BPMN 2.0)

Version: 4.22

Legal (Business) Units in DG TAXUD: C3

Assumptions: N/A



Process L4-CORE-01-15-Perform Change of Destination indicating Change of Place of Delivery

Abbreviations...

MSA

EMCS

e-AD

e-SAD

Existing Specifications: Design Document for National Excise Applications - v3.23  
  
L3 Reference Models: L3-CORE-01-09-Handle Change of Destination indicating Change of Place of Delivery

**Perform Change of Destination indicating Change of Place of Delivery**

Process: L4-CORE-01-15

Type: BPMN collaboration diagram (BPMN 2.0)

Version: 4.22

Legal (Business) Units in DG TAXUD: C3

Assumptions: N/A

EU Customs Functional Requirements BPM Report for Core

Version 4.22

Version Date 16/04/2025

Page 13 of 32

Process L4-CORE-01-16-Handle e-AD/e-SAD upon Change of Destination

Abbreviations...

MSA

EMCS

e-AD

e-SAD


Existing Specifications: Design Document for National Excise Applications - v3.23

L3 Reference Models:  
L3-CORE-01-10-Handle Change of Destination indicating Change of MSA of Destination  
L3-CORE-01-11-Handle Change of Destination indicating Change of Consignee

Handle e-AD/e-SAD upon Change of Destination

Process:  
L4-CORE-01-16

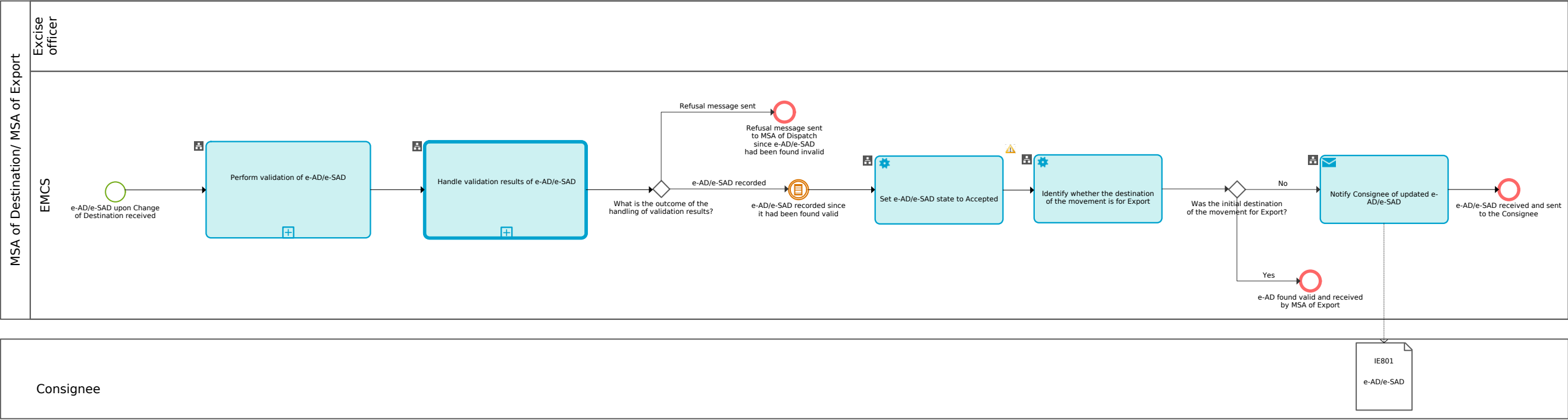
Type: BPMN collaboration diagram (BPMN 2.0)



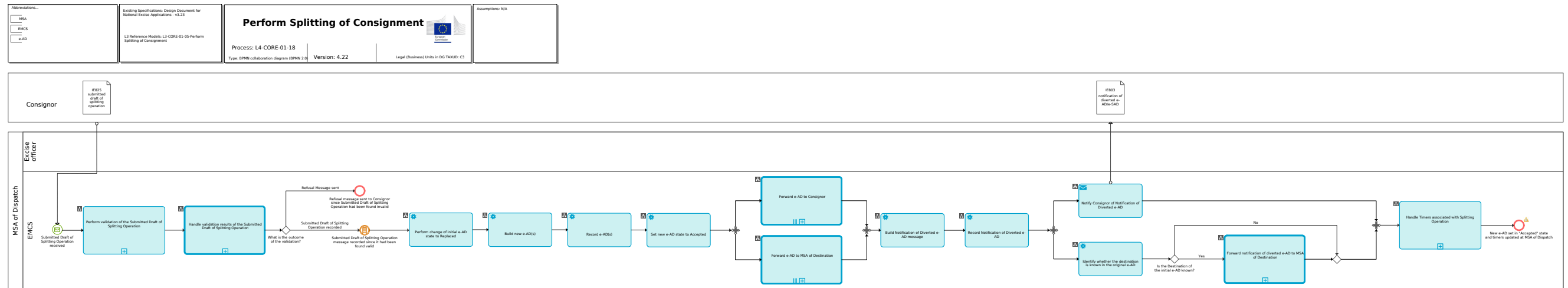
Version: 4.22

Legal (Business) Units in DG TAXUD: C3

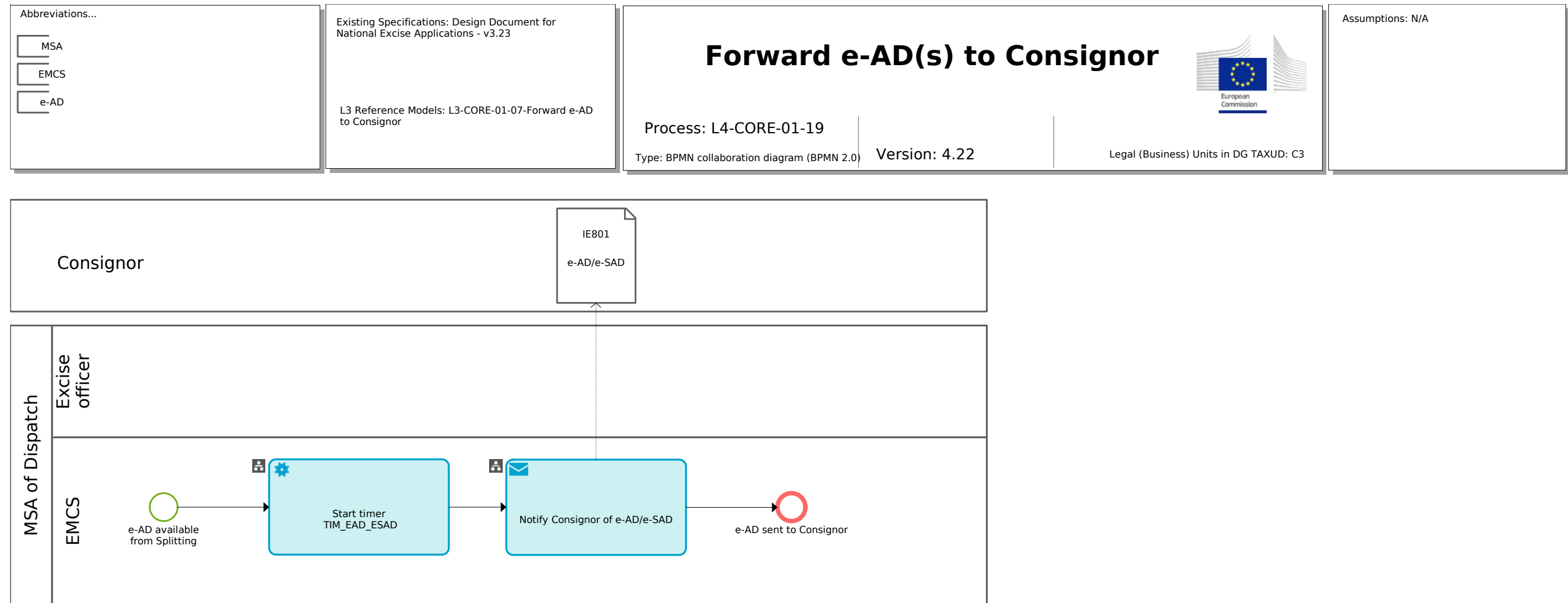
Assumptions: N/A



## Process L4-CORE-01-18-Perform Splitting of Consignment



## Process L4-CORE-01-19-Forward e-AD(s) to Consignor





Process L4-CORE-01-20-Forward e-AD(s) to MSA of Destination

Abbreviations...

MSA

EMCS

e-AD

Existing Specifications: Design Document for National Excise Applications - v3.23

L3 Reference Models: L3-CORE-01-08-Forward e-AD to MSA of Destination

Forward e-AD(s) to MSA of...

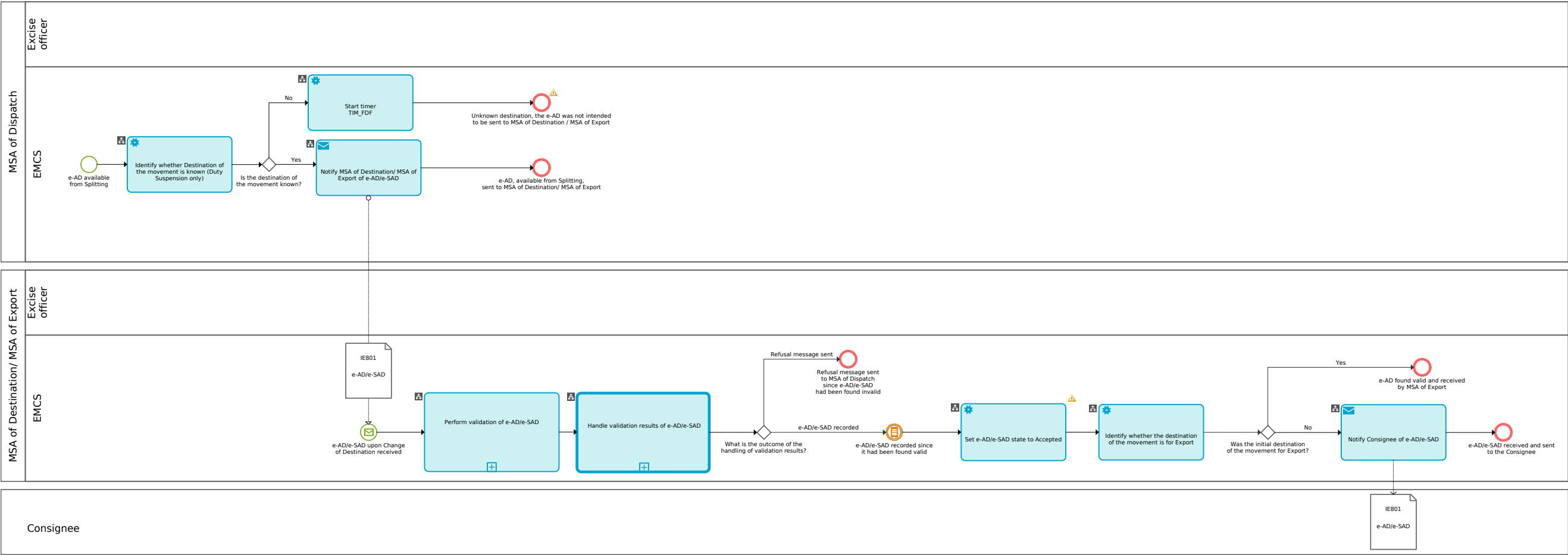
Process: L4-CORE-01-20

Type: BPMN collaboration diagram (BPMN 2.0)

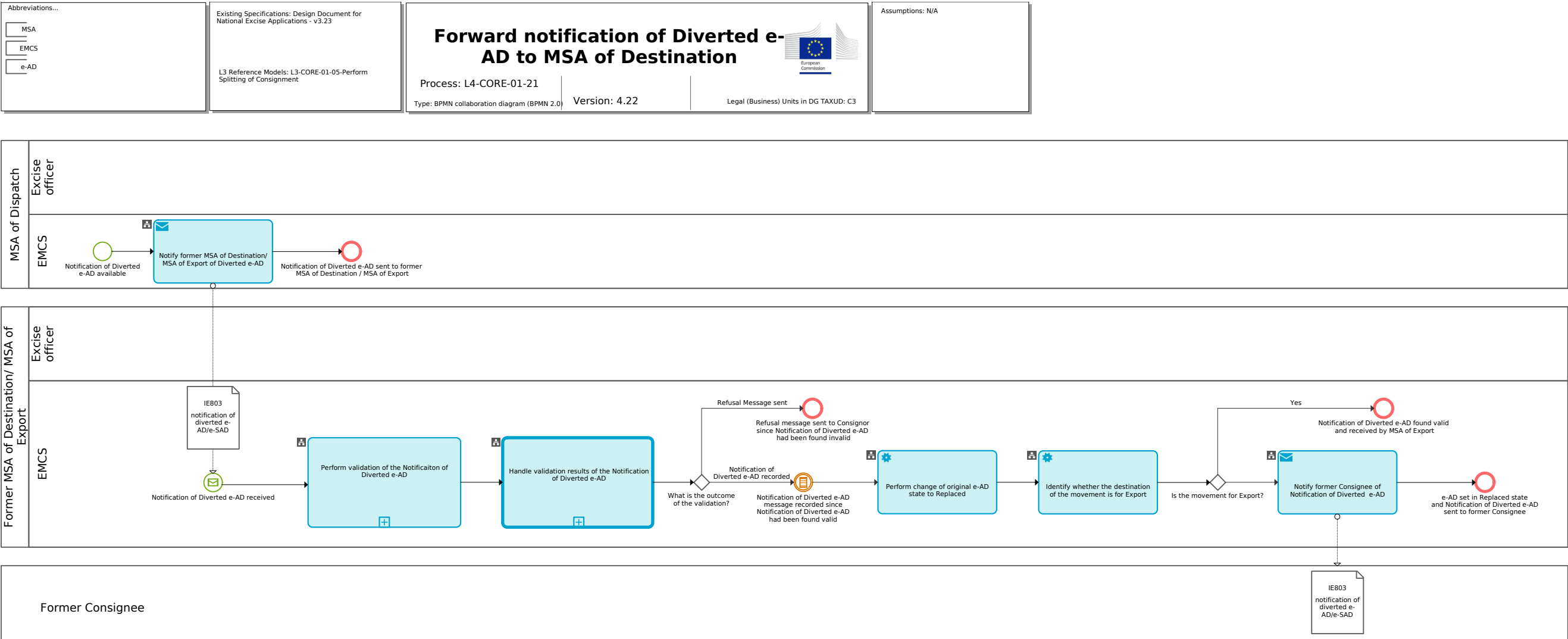
Version: 4.22

Legal (Business) Units in DG TAXUD: C3

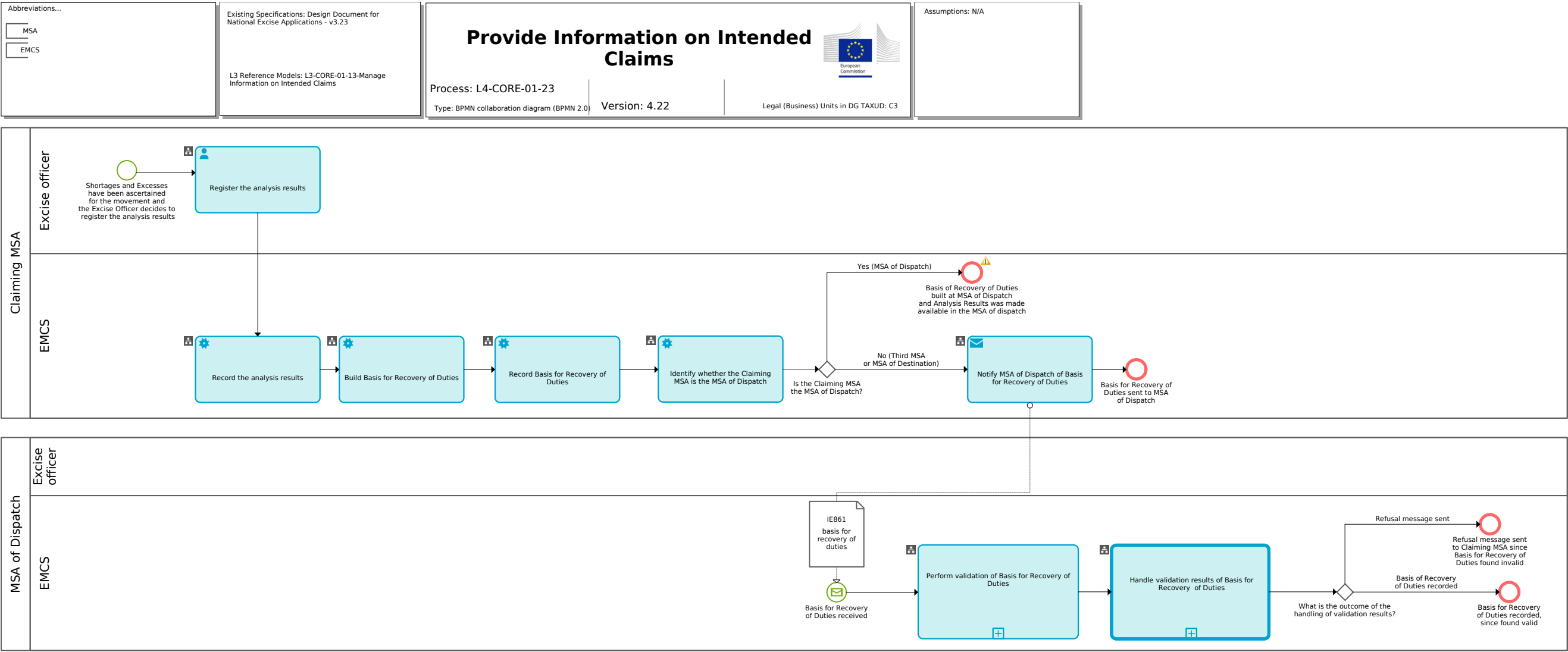
Assumptions: N/A



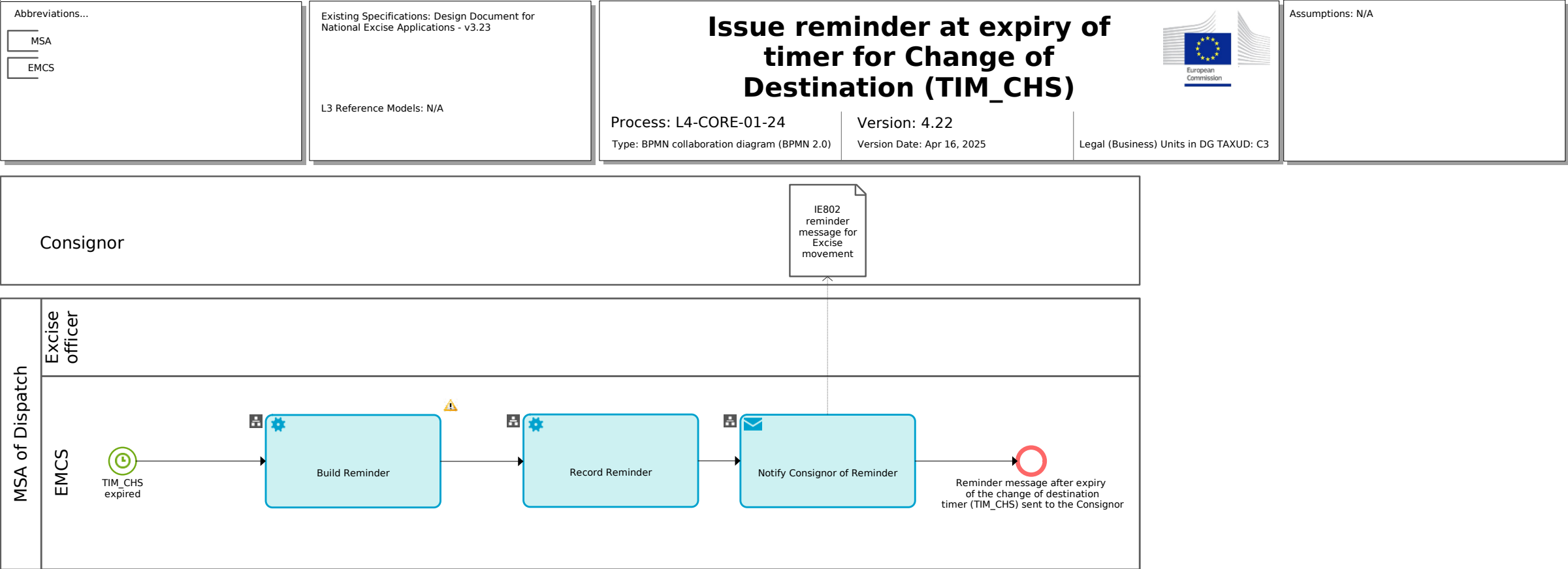
Process L4-CORE-01-21-Forward notification of Diverted e-AD to MSA of Destination



Process L4-CORE-01-23-Provide Information on Intended Claims



Process L4-CORE-01-24-Issue reminder at expiry of timer for Change of Destination (TIM\_CHS)



Process L4-CORE-01-25-Issue reminder at expiry of timer for Update of Destination Fields (TIM\_FDF)

Abbreviations...

MSA

EMCS

Existing Specifications: Design Document for National Excise Applications - v3.23

L3 Reference Models: N/A

Issue reminder at expiry of timer for Update of Destination fields (TIM\_FDF)

Process: L4-CORE-01-25

Type: BPMN collaboration diagram (BPMN 2.0)

Version: 4.22

Legal (Business) Units in DG TAXUD: C3

European Commission

Assumptions: N/A

Consignor

Excise officer

MSA of Dispatch

EMCS

```
graph LR
    Start([TIM_FDF expired]) --> Task1[Identify whether the destination fields of the e-AD are still empty]
    Task1 --> Decision1{Are the destination fields of the e-AD still empty?}
    Decision1 -- No --> End1((No reminder sent to Consignor))
    Decision1 -- Yes --> Task2[Build Reminder]
    Task2 --> Task3[Record Reminder]
    Task3 --> Task4[Notify Consignor of Reminder]
    Task4 --> Event1[Draft Explanation on Delay of Consignor received]
    Event1 --> Task5[Perform validation of draft Explanation on Delay]
    Task5 --> Task6[Handle validation results of draft Explanation on Delay]
    Task6 --> Decision2{What is the outcome of the handling of validation results?}
    Decision2 -- "Explanation on Delay of Consignor recorded" --> Task7[Explanation on Delay of Consignor recorded since draft Explanation on Delay had been found valid]
    Task7 --> End2((Explanation on Delay of Consignor recorded))
    Decision2 -- "Refusal message sent" --> Task8[Refusal message sent to Consignor since draft Explanation on Delay had been found invalid]
    Task8 -- "Refusal message sent" --> Consignor
    Consignor -- "IE802 reminder message for Excise movement" --> Task4
    Consignor -- "IE837 Draft Explanation on Delay for Delivery" --> Event1
```

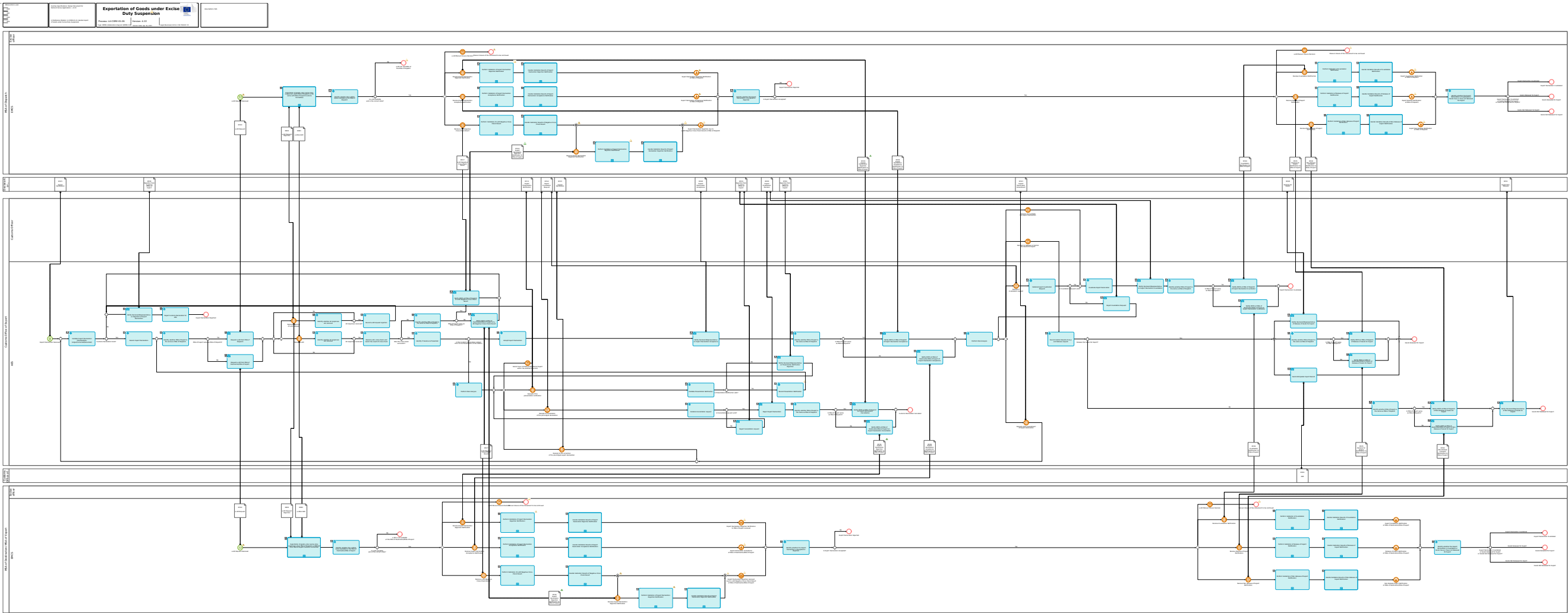
EU Customs Functional Requirements BPM Report for Core

Version 4.22

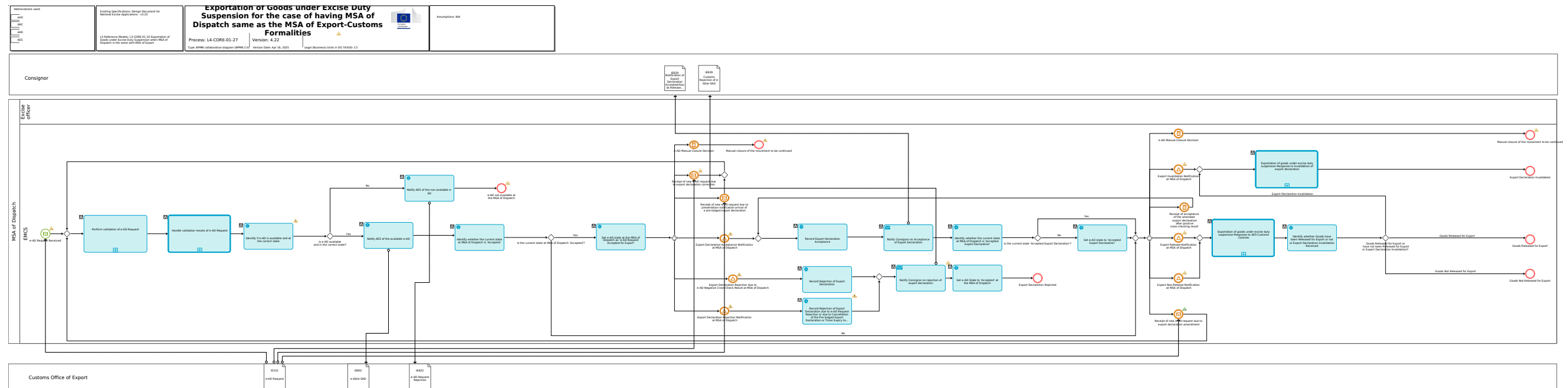
Version Date 16/04/2025

Page 21 of 32

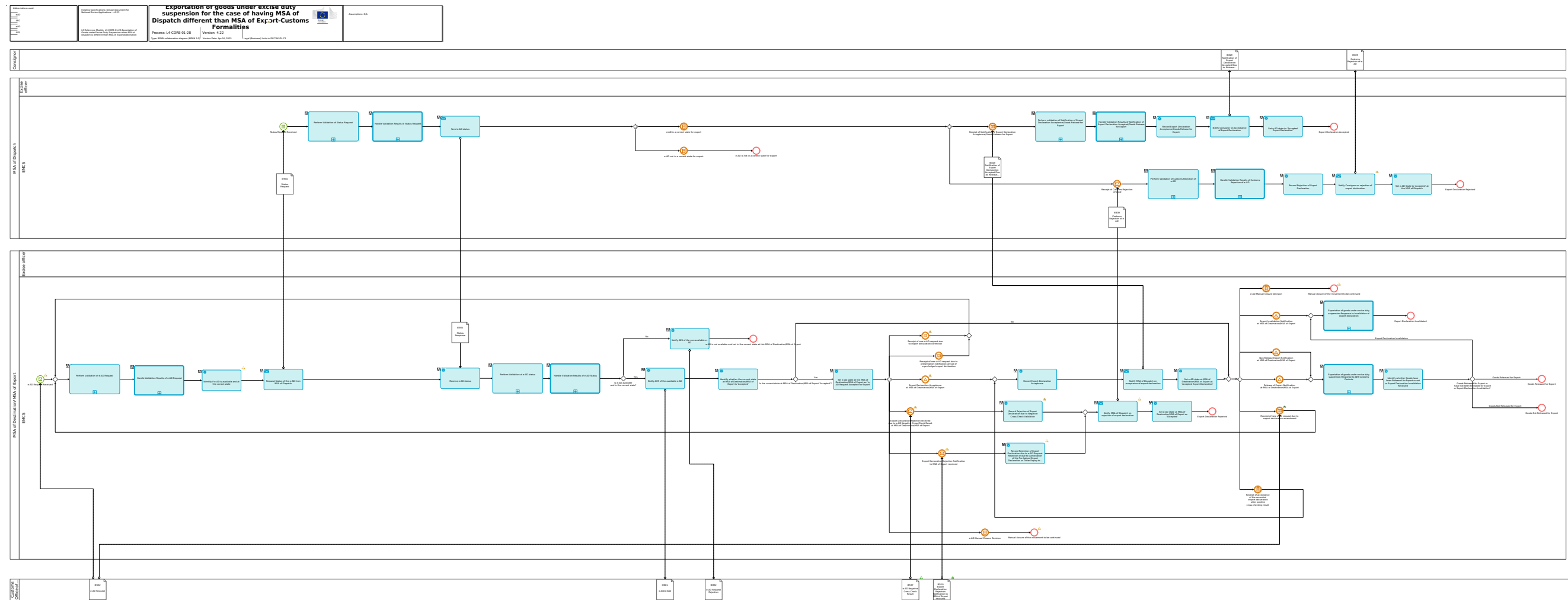
Process L4-CORE-01-26-Exportation of Goods under Excise Duty Suspension



Process L4-CORE-01-27-Exportation of Goods under Excise Duty Suspension for the case of having MSA of Dispatch same as the MSA of Export-Customs Formalities

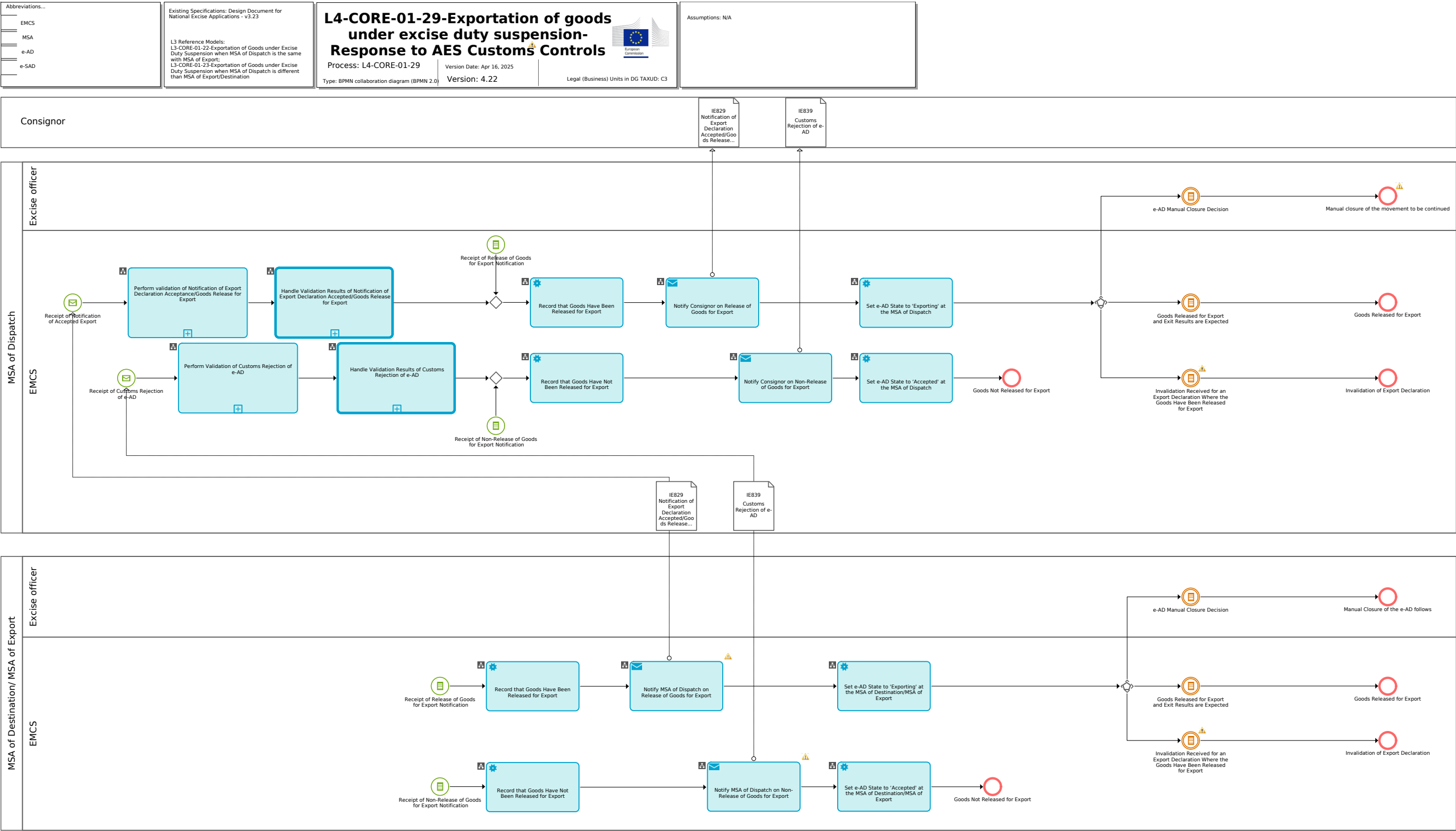


Process L4-CORE-01-28-Exportation of Goods under Excise Duty Suspension for the case of having MSA of Dispatch different than MSA of Export-Customs Formalities

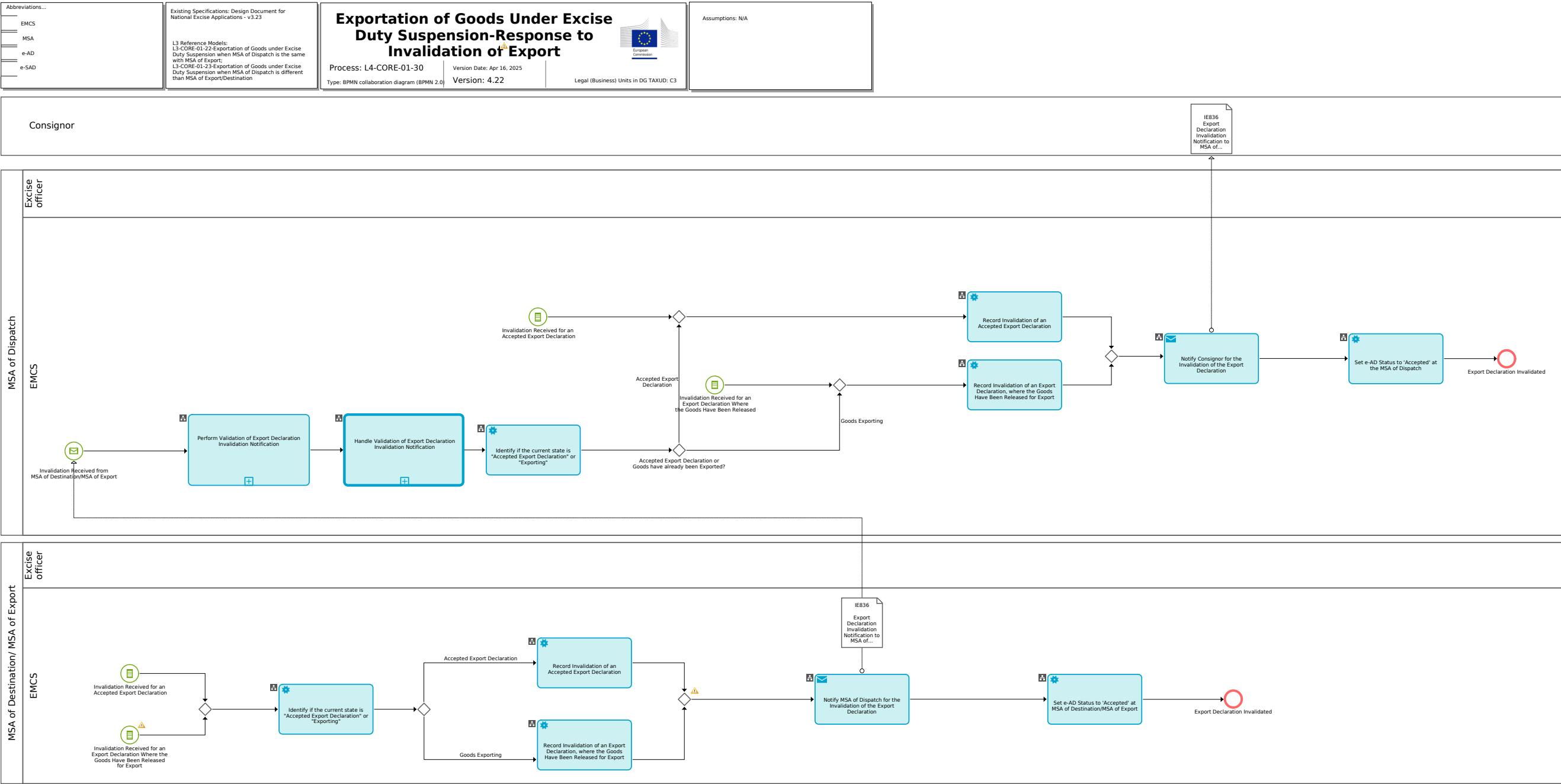




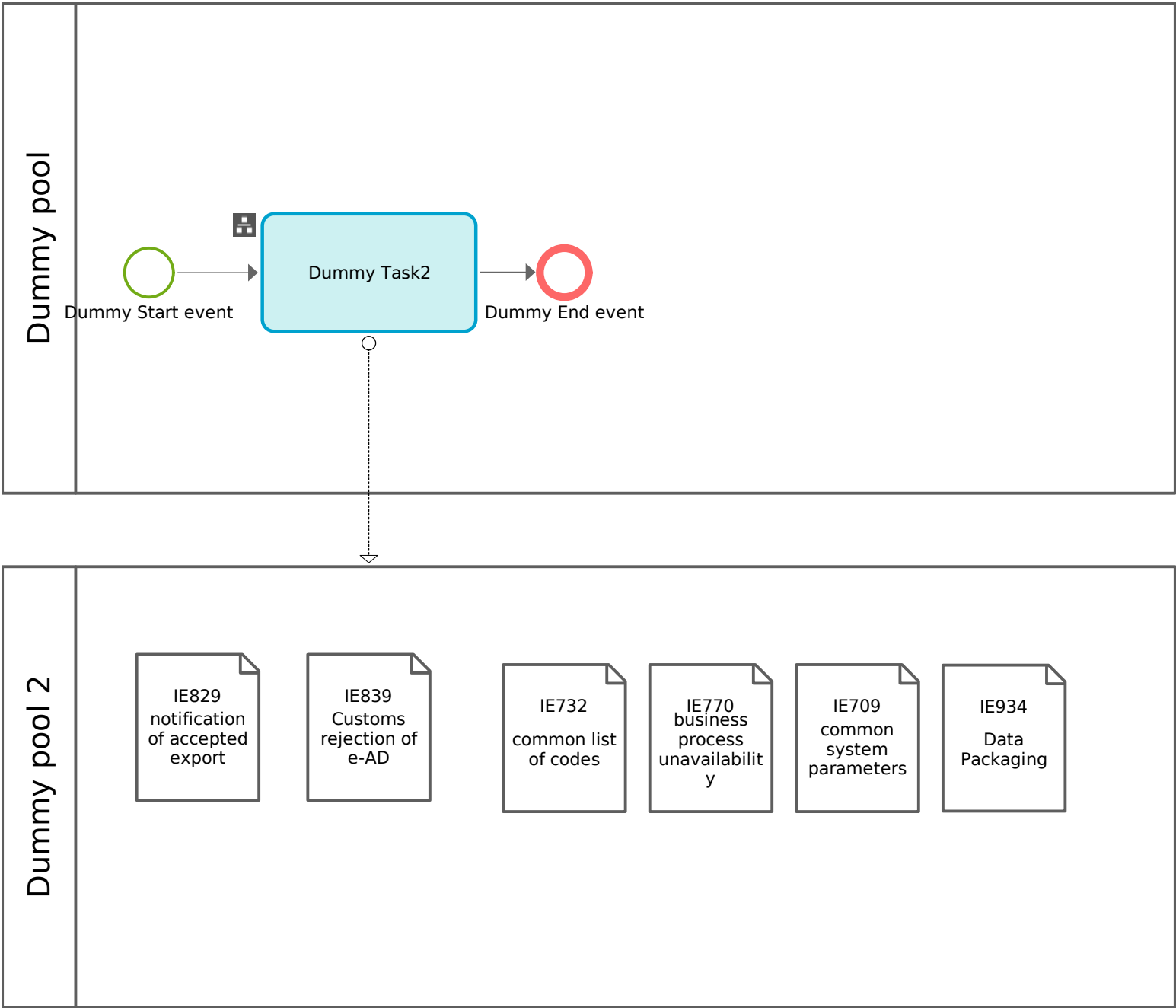
Process L4-CORE-01-29-Exportation of Goods under Excise Duty Suspension-Response to AES Customs Controls



Process L4-CORE-01-30-Exportation of Goods under Excise Duty Suspension-Response to Invalidation of Export Declaration



Process L4-CORE-Dummy



Process L4-CORE-01-03-Perform validation of Common Domain message

Abbreviations used:


Existing Specifications: Design Document for National Excise Applications - v3.23  
  
L3 Reference Models: N/A

Perform validation of Common Domain message

Process: L4-CORE-01-03  
Type: BPMN process diagram (BPMN 2.0)

Version: 4.22

Legal (Business) Units in DG TAXUD: C3



Assumptions: N/A

```
graph LR; Start((Common Domain message received)) --> Task1[Perform Syntactic validation of Common Domain message]; Task1 --> Decision1{Has the Common Domain message passed Syntactic validation successfully?}; Decision1 -- No --> End1((Common Domain message found invalid due to Syntatic violation(s))); Decision1 -- Yes --> Task2[Perform Coordination Protocol validation of Common Domain message]; Task2 --> Decision2{Has the Common Domain message passed Coordination Protocol validation successfully?}; Decision2 -- Yes --> End2((Common Domain message found valid)); Decision2 -- No --> End3((Common Domain message found invalid due to Coordination Protocol violation(s)));
```

The diagram illustrates the process of validating a Common Domain message. It begins with a start event labeled 'Common Domain message received'. This leads to a task 'Perform Syntactic validation of Common Domain message'. Following this task is a decision diamond asking 'Has the Common Domain message passed Syntactic validation successfully?'. If the answer is 'No', the process ends at an event labeled 'Common Domain message found invalid due to Syntatic violation(s)'. If the answer is 'Yes', the process continues to a second task 'Perform Coordination Protocol validation of Common Domain message'. This is followed by another decision diamond asking 'Has the Common Domain message passed Coordination Protocol validation successfully?'. If 'Yes', the process ends at an event labeled 'Common Domain message found valid'. If 'No', the process ends at an event labeled 'Common Domain message found invalid due to Coordination Protocol violation(s)'.

EU Customs Functional Requirements BPM Report for Core

Version 4.22

Version Date 16/04/2025

Page 28 of 32

Process L4-CORE-01-04-Perform validation of External Domain message

Abbreviations used:

Existing Specifications: Design Document for National Excise Applications - v3.23  
  
L3 Reference Models:  
L3-CORE-01-01-Submit and Register an e-AD  
L3-CORE-01-02-Perform Report of Receipt/Export  
L3-CORE-01-04-Perform Cancellation  
L3-CORE-01-05-Perform Splitting of Consignment  
L3-CORE-01-06-Perform Change of Destination  
L3-CORE-01-12-Manage Explanations on Reasons for Shortages or Excesses

Perform validations on External Domain messages

Process: L4-CORE-01-04

Type: BPMN process diagram (BPMN 2.0)

Version: 4.22

Legal (Business) Units in DG TAXUD: C3



Assumptions: N/A

The diagram illustrates the process for validating an external domain message. It begins with a start event (green circle) labeled 'External Domain message received'. This leads to a task (blue rectangle with a gear icon) 'Perform Syntactic validation of External Domain message'. A decision diamond follows, asking 'Has the External Domain message passed Syntactic validation successfully?'. If 'No', the process ends at an end event (red circle) labeled 'External Domain message found invalid due to Syntactic violation(s)'. If 'Yes', it proceeds to another task 'Perform Coordination Protocol validation of External Domain message'. This is followed by a second decision diamond asking 'Has the External Domain message passed Coordination Protocol validation successfully?'. If 'No', it ends at an end event labeled 'External Domain message found invalid due to Coordination Protocol violation(s)'. If 'Yes', it proceeds to a third task 'Perform Business Compliance validation of External Domain message'. This is followed by a third decision diamond asking 'Has the External Domain message passed Business Compliance validation successfully?'. If 'No', it ends at an end event labeled 'External Domain message found invalid due to Business Compliance violation(s)'. If 'Yes', it ends at a final end event labeled 'External Domain message found valid'.

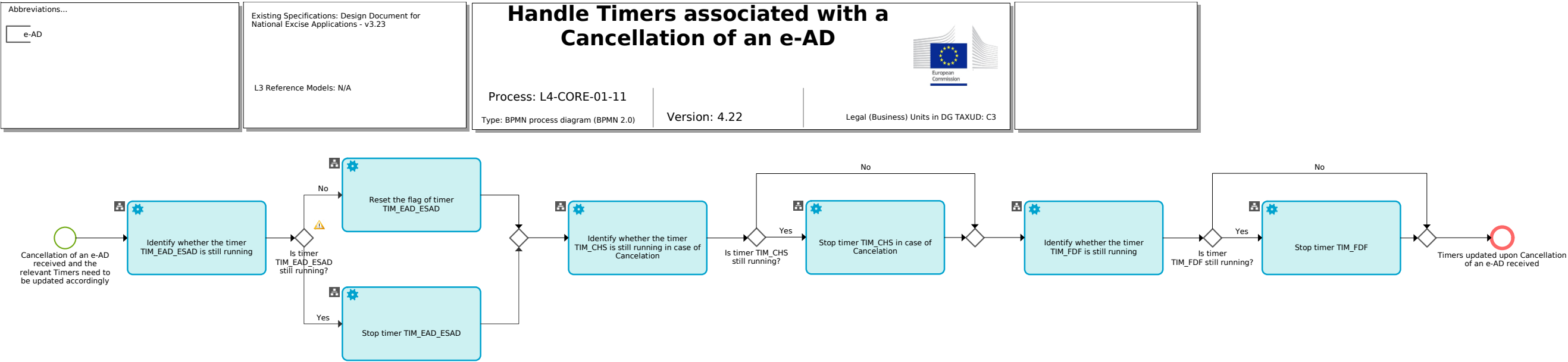
EU Customs Functional Requirements BPM Report for Core

Version 4.22

Version Date 16/04/2025

Page 29 of 32

Process L4-CORE-01-11-Handle Timers associated with a Cancellation of an e-AD



EU Customs Functional Requirements BPM Report for Core

Version 4.22

Version Date 16/04/2025

Page 30 of 32

Process L4-CORE-01-17-Handle Timers associated with a Change of Destination

Abbreviations...  
e-AD  
e-SAD

Existing Specifications: Design Document for National Excise Applications - v3.23

L3 Reference Models: N/A


Handle Timers associated with a Change of Destination

Process: L4-CORE-01-17

Type: BPMN process diagram (BPMN 2.0)

Version: 4.22

Legal (Business) Units in DG TAXUD: C3



Assumptions: N/A

The diagram illustrates the process flow for handling timers when a change of destination is received. It begins with a start event (green circle) labeled "Change of Destination received and timers need to be updated accordingly". This leads to a task "Identify whether the journey time is updated". A decision diamond follows, asking "Does the Change of Destination include journey time updates?". If "Yes", it proceeds to "Identify whether the timer TIM\_EAD\_ESAD is still running". If "No", it proceeds to "Reset the flag of timer TIM\_EAD\_ESAD" and then "Perform restart of the timer TIM\_EAD\_ESAD". From the "Identify whether the timer TIM\_EAD\_ESAD is still running" task, a decision diamond asks "Is timer TIM\_EAD\_ESAD still running?". If "Yes", it leads to "Perform update of the timer TIM\_EAD\_ESAD". If "No", it leads to "Reset the flag of timer TIM\_EAD\_ESAD" and then "Perform restart of the timer TIM\_EAD\_ESAD". Both paths for TIM\_EAD\_ESAD merge and lead to a decision diamond asking "Identify whether the timer TIM\_CHS is still running". If "Yes", it leads to "Stop timer TIM\_CHS". If "No", it leads to "Reset the flag of timer TIM\_CHS". Both paths for TIM\_CHS merge and lead to a decision diamond asking "Identify whether the timer TIM\_FDF is still running". If "Yes", it leads to "Stop timer TIM\_FDF". If "No", it leads to "Reset of the flag of timer TIM\_FDF". Both paths for TIM\_FDF merge and lead to a final end event (red circle) labeled "Timers updated upon Change of Destination message received".

EU Customs Functional Requirements BPM Report for Core

Version 4.22

Version Date 16/04/2025

Page 31 of 32

Process L4-CORE-01-22-Handle Timers associated with Splitting Operation


Abbreviations...  
e-AD

Existing Specifications: Design Document for National Excise Applications - v3.23  
  
L3 Reference Models: N/A

Handle Timers associated with Splitting Operation

Process: L4-CORE-01-22  
Type: BPMN process diagram (BPMN 2.0)

Version: 4.22

  
Legal (Business) Units in DG TAXUD: C3

Assumptions: N/A

```
graph LR; Start([Submitted Draft of Splitting Operation received and timers need to be updated accordingly]) --> ID1[Identify whether the timer TIM_EAD_ESAD associated with the initial e-AD is still running]; ID1 --> D1{Is timer TIM_EAD_ESAD still running?}; D1 -- Yes --> S1[Stop timer TIM_EAD_ESAD]; D1 -- No --> R1[Reset the flag of timer TIM_EAD_ESAD]; S1 --> J1{ }; R1 --> J1; J1 --> ID2[Identify whether the timer TIM_CHS associated with the initial e-AD is still running]; ID2 --> D2{Is timer TIM_CHS still running?}; D2 -- Yes --> S2[Stop timer TIM_CHS]; D2 -- No --> R2[Reset the flag of timer TIM_CHS]; S2 --> J2{ }; R2 --> J2; J2 --> ID3[Identify whether the timer TIM_FDF associated with the initial e-AD is still running]; ID3 --> D3{Is timer TIM_FDF still running?}; D3 -- Yes --> S3[Stop timer TIM_FDF]; D3 -- No --> R3[Reset of the flag of timer TIM_FDF]; S3 --> J3{ }; R3 --> J3; J3 --> End([Timers updated upon Submitted Splitting Operation message received and new e-ADs were generated]);
```

EU Customs Functional Requirements BPM Report for Core

Version 4.22

Version Date 16/04/2025

Page 32 of 32